

Barney the Dinosaur is depicted on the left side of the cover. He is wearing a dark, short-sleeved shirt with four horizontal rows of buttons. He has a small crown or hat on his head with a white pom-pom on top. He is smiling and has his right hand raised to his ear. The background of the entire cover is dark with a pattern of light-colored circles.

**PLAYSKOOL**<sup>®</sup>

**Barney's**  
**ANIMAL KEYBOARD™**  
**SONGBOOK**



Questions? Call:

**1-800-PLAYSKL**<sup>™</sup>

# Old MacDonald



Old

Mac

- Don

- ald

had

a

farm



E

-

I

-

E

-

I

-

O.



And

on

his

farm

he

had

a

( )



E

-

I

-

E

-

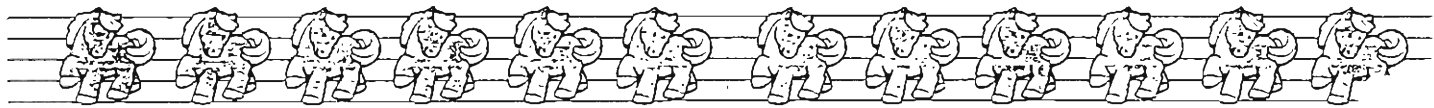
I

-

O.



With a ( ) ( ) here and a ( ) ( ) there,



here a ( ), there a ( ), ev - ery - where a ( ) ( ).

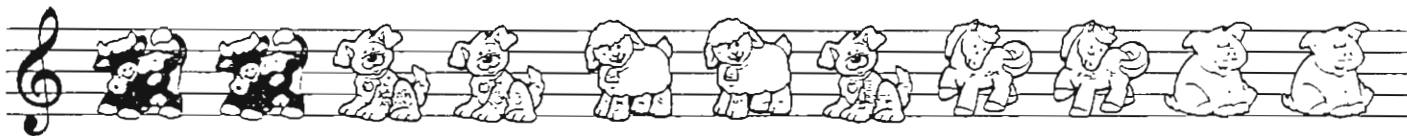


Old Mac - Don - ald had a farm



E - I - E - I - O.

# Twinkle, Twinkle Little Star



Twink - le, twink - le lit - tle star, how I won - der



what you are. Up a - bove the world so high,



like a di - amond in the sky, Twink - le, twink - le



lit - tle star, how I won - der what you are.

# Mary Had A Little Lamb



Ma

-

ry

had

a

lit

-

tle

lamb,



lit

-

tle

lamb,

lit

-

tle

lamb.



Ma

-

ry

had

a

lit

-

tle

lamb



its

fleece

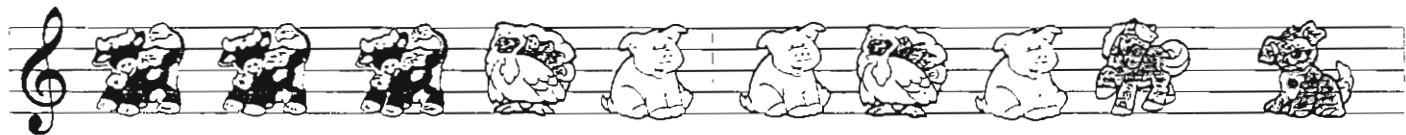
was

white

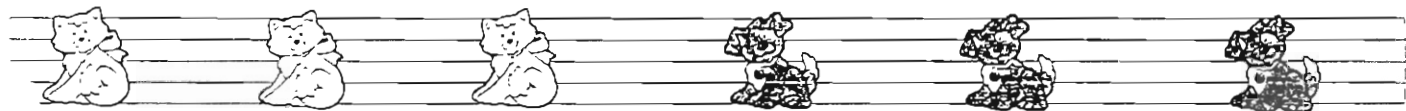
as

snow.

# Row, Row, Row Your Boat



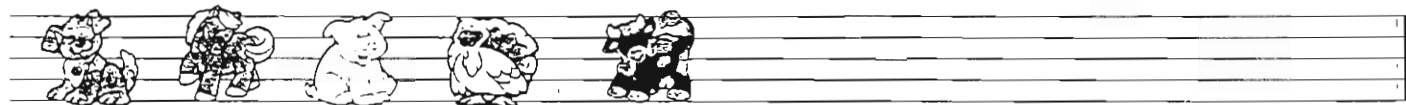
Row, row, row your boat gent - ly down the stream.



Mer - ri - ly, mer - ri - ly,



mer - ri - ly, mer - ri - ly,



life is but a dream.

# London Bridge is Falling Down



Lon - don

Bridge

is

fall - ing

down,



fall - ing

down,

fall - ing

down.



Lon - don

Bridge

is

fall - ing

down,



my

fair

la - dy.

# The Farmer In The Dell



The



far - mer



in



the



dell,



the



far - mer



in



the



dell,



hi



- ho



the



der

-



ry

-



o,



the



far - mer



in



the



dell.