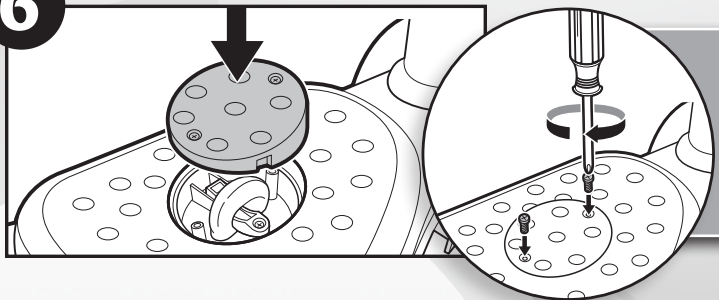


6

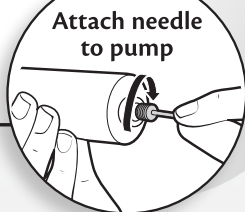
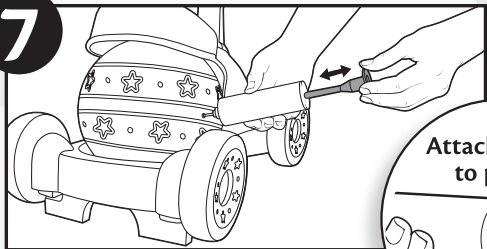
Attach ball safety cover and tighten screws into place.



Turn toy upside down. Repeat steps 5 and 6 to secure ball to bottom of toy.

7

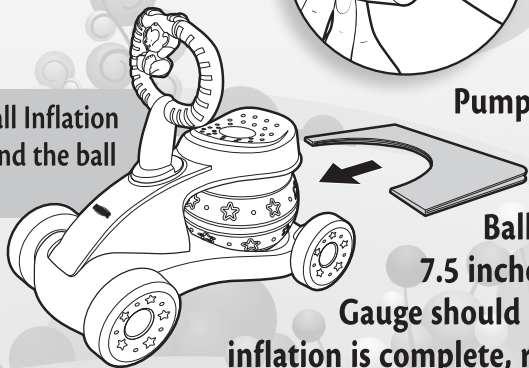
You will need a hand pump (not included) to inflate ball.



Attach needle to pump

NOTE: Keep ball away from sharp objects.

Place the Ball Inflation Gauge around the ball as shown.



Pump enough air into the ball so that it fits inside the Ball Inflation Gauge.

Ball should be approximately 7.5 inches (19.1 cm) in diameter.

Gauge should be easy to remove. Once inflation is complete, remove needle from ball.

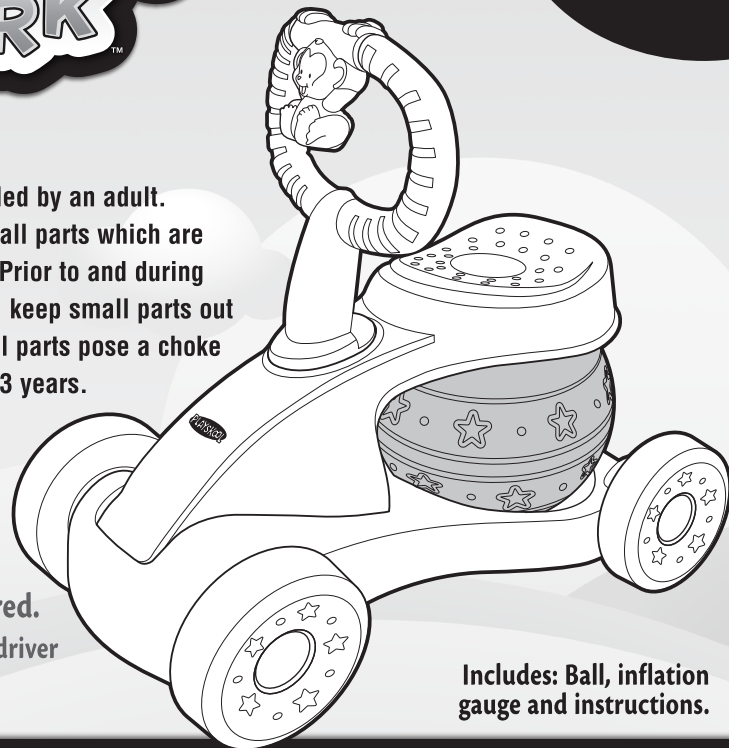


OVER  
12  
months



WARNING:

Product must be assembled by an adult. This product contains small parts which are necessary for assembly. Prior to and during assembly of this product, keep small parts out of children's reach. Small parts pose a choke hazard to children under 3 years.



Adult assembly required. Phillips/cross head screwdriver (not included) needed for replacement.

Includes: Ball, inflation gauge and instructions.



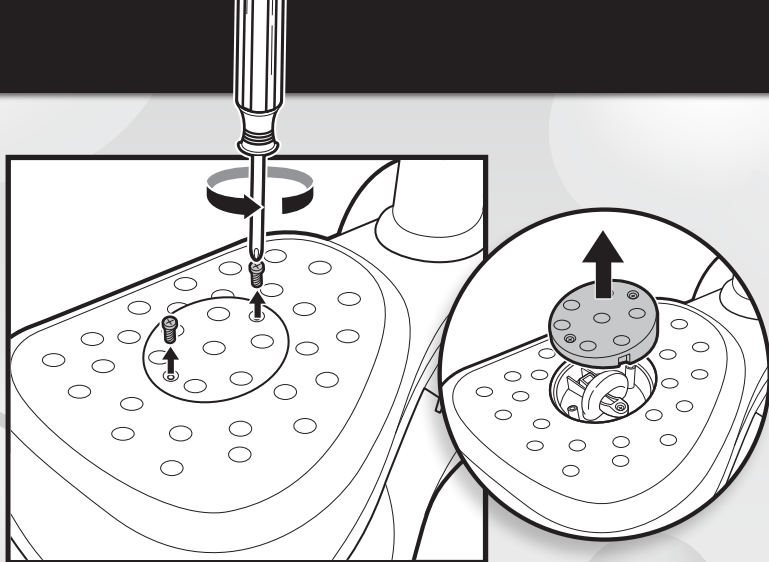
31937 PN 7189780000

© 2011 Hasbro. All Rights Reserved. TM & © denote U.S. Trademarks. Patent pending.

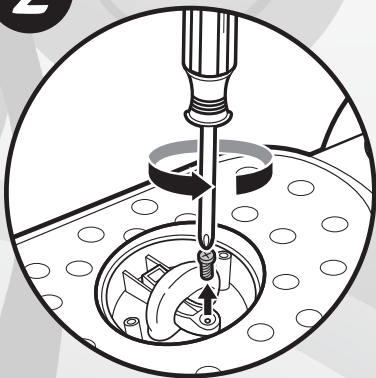
Bounce 'n Ride™  
Ball Replacement Instructions



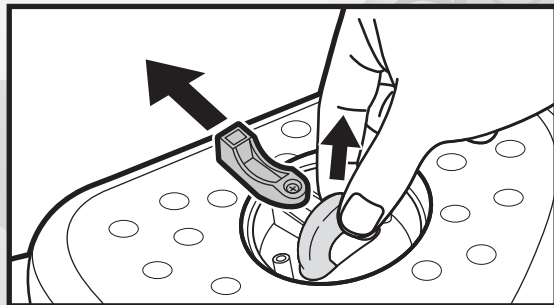
**1** Remove screws from seat cover and remove cover.



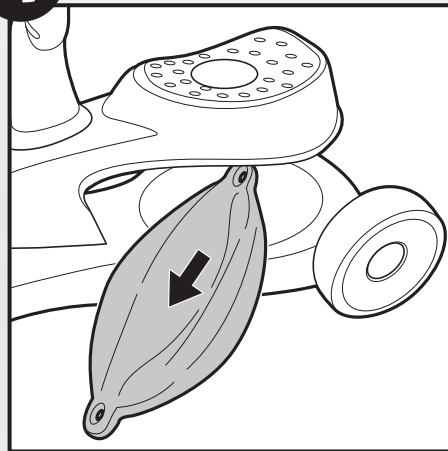
**2** Remove screw from bracket.



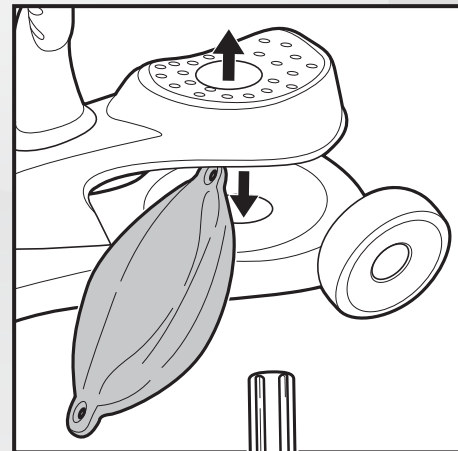
**3** Pull up on ball loop and remove bracket.



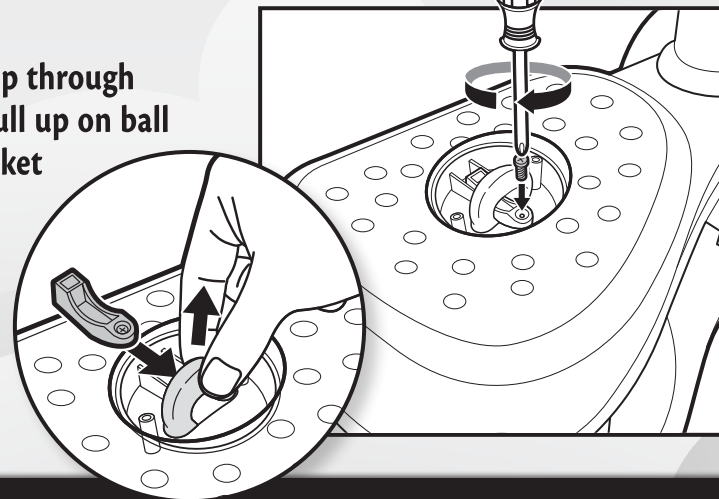
**4** Remove old ball.



Insert new ball.



**5** Pull ball loop through opening on seat. Pull up on ball loop and slide bracket through ball loop. Tighten screw to hold it in place.



Turn toy upside down. Locate the ball safety cover and repeat steps 1-3.