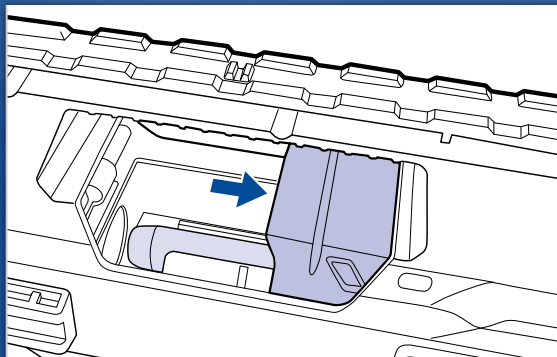


CLEARING A JAM



If blaster appears jammed:

1. Release **ACCELERATION TRIGGER**.
2. Open **JAM CLEARING DOOR** and remove any jammed darts. Close door.

NOTE: Blaster will not function unless **JAM CLEARING DOOR** is fully closed.

IMPORTANT: BATTERY INFORMATION



CAUTION:

1. TO AVOID BATTERY LEAKAGE

- a. Always follow the instructions carefully. Use only batteries specified and be sure to insert them correctly by matching the + and – polarity markings.
- b. Do not mix old batteries and new batteries or standard (carbon-zinc) with alkaline batteries.
- c. Remove exhausted or dead batteries from the product.
- d. Remove batteries if product is not to be played with for a long time.
- e. Do not short-circuit the supply terminals.
- f. **RECHARGEABLE BATTERIES:** Do not mix these with any other types of batteries. Always remove from the product before recharging. Recharge batteries under adult supervision. **DO NOT RECHARGE OTHER TYPES OF BATTERIES.**

2. Should this product cause, or be affected by, local electrical interference, move it away from other electrical equipment. Reset (switching off and back on again or removing and re-inserting batteries) if necessary.

Product and colors may vary.

YouTube and the YouTube logo are trademarks of Google Inc.
®* and/or TM* & © 2012 Hasbro. All Rights Reserved.
TM & ® denote U.S. Trademarks.
EC Reg. Des. App.

A3901 PN 7339080000



Hey NERF Nation!

Join us online and keep up with the latest and greatest news from NERF!



Ask a parent before going online.

Questions? Call 1-800-327-8264

NERF®

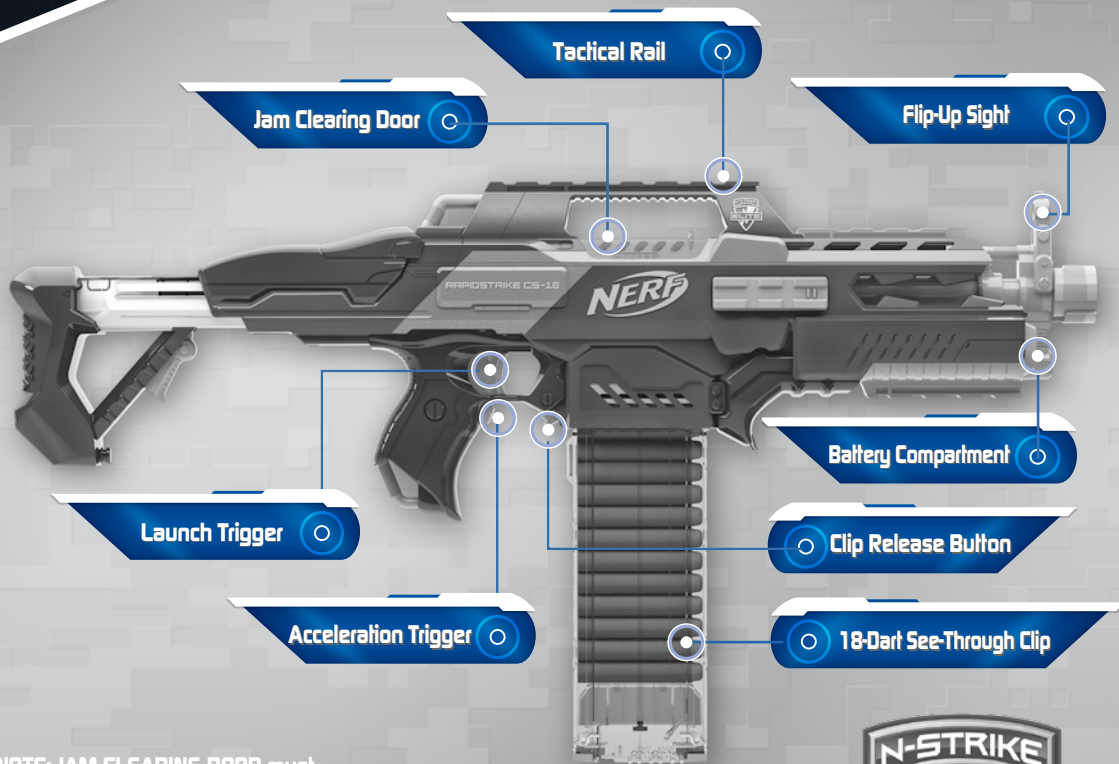
AGES 8+

X4 1.5V C
**ALKALINE
BATTERIES
REQUIRED**
NOT INCLUDED



CAUTION:

Do not aim at eyes or face.
TO AVOID INJURY: Use only darts designed for this product. Do not modify darts or dart blaster.



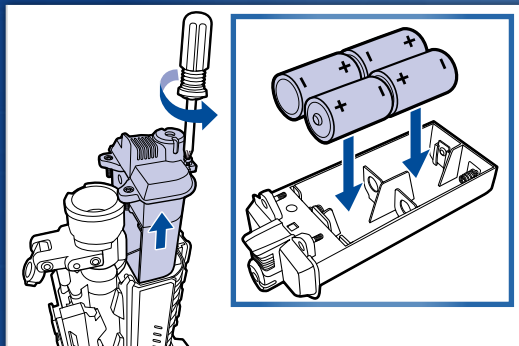
NOTE: JAM CLEARING DOOR must be fully closed for blaster to fire.

Be sure to read and follow all instructions carefully before using this product.



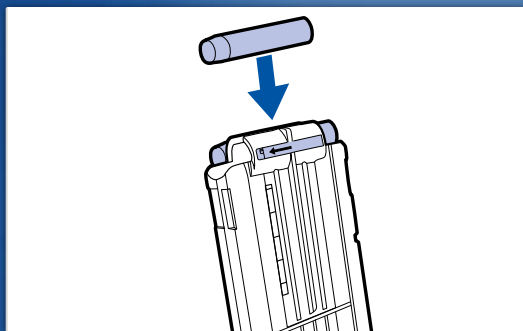
RAPIDSTRIKE CS-18™*

TO INSERT BATTERIES



Phillips/cross head screwdriver (not included) needed to insert batteries. Loosen screws in battery compartment (screws remain attached to cover). Remove compartment. Insert 4 x 1.5V C alkaline batteries (not included). Replace compartment and tighten screws.

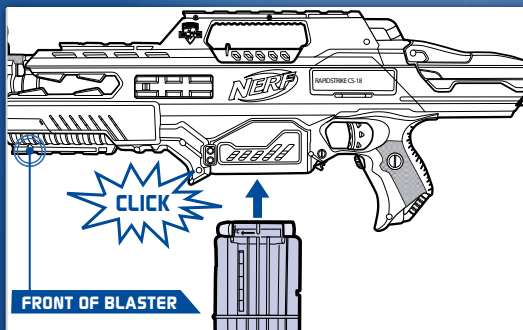
LOADING AMMO



Load DARTS into SEE-THROUGH CLIP.

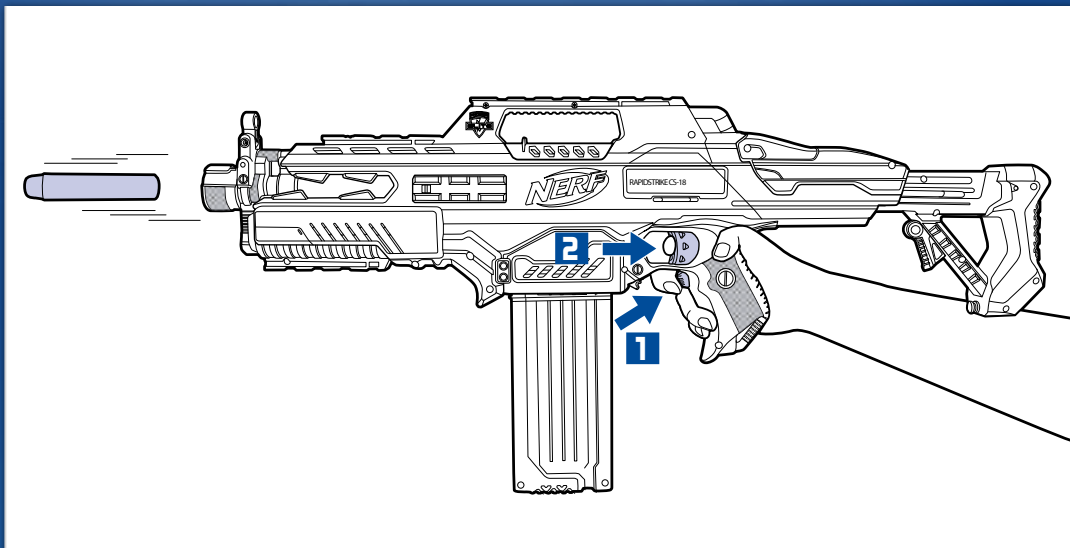
- Be sure DARTS are inserted in direction indicated on CLIP.
- Insert 1 DART at a time and push down.
- CLIP can hold up to 18 DARTS.

INSERTING CLIP



Insert CLIP into BLASTER (make sure arrow on CLIP points away from TRIGGER).

FIRING

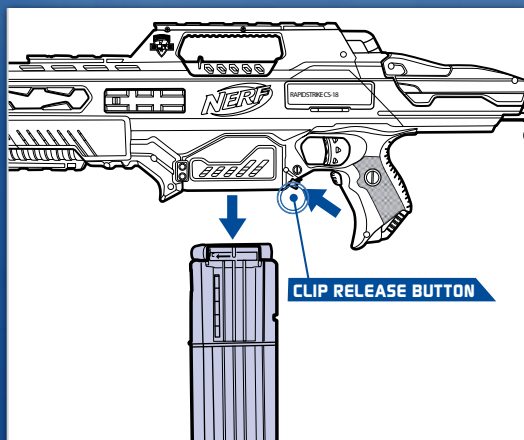


1. Press and hold the **ACCELERATION TRIGGER** to turn on the motor.

2. While holding the **ACCELERATION TRIGGER**, pull and hold the **LAUNCH TRIGGER** to fire.

NOTE: **JAM CLEARING DOOR** must be fully closed for blaster to fire.

RELOADING



1. Press **CLIP RELEASE BUTTON** to remove **CLIP**.

2. Repeat steps for loading ammo.