



AGES 8+

Adult installation required.
Personal computer & printer required.

Minimum System Requirements

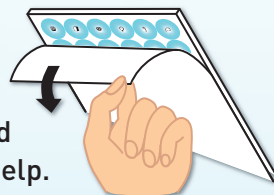
	Windows	Macintosh	Linux
Processor	2 GHz	1.83 GHz Intel	2 GHz
Memory	1 GB	512 MB	1 GB
OS	Windows XP/ Vista/ 7	Mac OS X 10.4.11	Fedora 8/ Ubuntu 7.10/ OpenSuse 10.3
Printer	600 dpi B&W	600 dpi B&W	600 dpi B&W
CD-ROM	4x	4x	4x

CONTENTS

- 300 Ji Ga Zo™ puzzle pieces
- CD-ROM with software and instructions
- Assembly grid

BEFORE YOU START

- Remove the Ji Ga Zo™ puzzle pieces from the four boards by peeling the backer board away and punching the pieces out from the back.
- Lay the assembly grid on a flat surface. If the grid won't lie flat, gently folding it back slightly may help.



INSTALL THE SOFTWARE

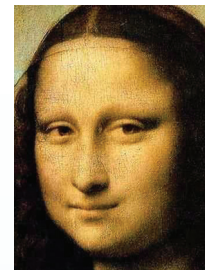
Insert the CD-ROM into your computer. Follow the instructions that appear on-screen. If you have any trouble installing the software, see the TROUBLESHOOTING section.

CREATE A JI GA ZO™ PUZZLE!

- 1. Upload a photo.** Click the "New Ji Ga Zo" button to upload a photo from your computer or to open a photo from the Ji Ga Zo gallery.
 - Photos need to be in .jpg format.
 - Since Ji Ga Zo is a vertical puzzle, select a photo that will look good in a vertical format.
 - Ji Ga Zo puzzles work best on faces – human or otherwise!
 - Ji Ga Zo defaults to your computer's Pictures folder when you select "New Ji Ga Zo". When you save a photo that you have cropped and created a Ji Ga Zo from, it saves it in the Documents folder on your hard drive. You can also delete Ji Ga Zo files from your Documents folder.

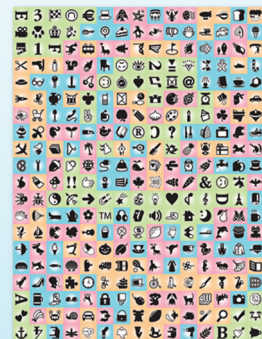
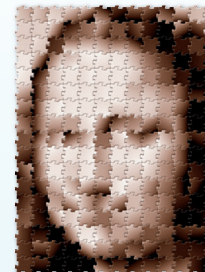
- 2. Edit your photo.** Adjust the cropping and contrast of your photo, then enter your title and comments and click the "Create Ji Ga Zo" button!

- Contrast is the difference between the whites, grays, and dark colors of a photo.
- If you increase the contrast, there will be more black and white spots and fewer gray areas. If you decrease the contrast, you will have more gray parts and fewer black and white areas.
- You want to adjust the contrast so that there is a blend of white, gray, and black to the photos.
- You also should move and zoom the photo so that the face nearly fills the Ji Ga Zo puzzle. This will give more detail to your final puzzle!



- 3. Check your results.** If you're happy, click the "Save & Preview" button to continue, or click "Start Over" to make changes.

- If you click "Start Over," you will lose any adjustments you made to the picture, including comments, name, zooming, and contrast.
- Once you click "Save & Preview," your Ji Ga Zo puzzle will automatically be saved to your gallery. You can retrieve this Ji Ga Zo from the gallery at a later date.



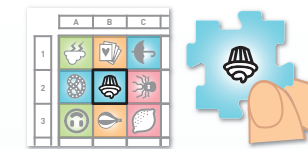
- 4. Print icon map.** Click "Print" to print your Icon Map. Check "Icon Map Only" to print a bigger map and to not print your title, comments, and thumbnail image.

- You may want to hide the thumbnail image to give this Icon Map to someone as a surprise. If the thumbnail is hidden, they won't know what the final Ji Ga Zo puzzle will look like until they've built it!

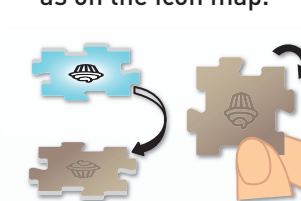
- 5. Build your puzzle!** The icon map tells you the placement of each puzzle piece. Be sure to place the icons in the appropriate rotation. Build the puzzle with the shaded side up. If you hold the puzzle piece at an angle, you can see a shiny icon printed on top that matches the colored icon on the bottom of each piece.



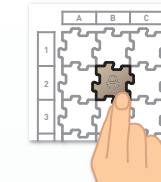
- Take any puzzle piece and find its placement and orientation on the icon map guide.



- Flip the piece over to the shaded side and rotate it so the icon is the same orientation as on the icon map.



- Place the piece on the correct spot on the assembly grid.



- After you have completed your Ji Ga Zo™ puzzle, step 5-10 feet away to see your image come to life!

TROUBLESHOOTING

If you are having trouble installing the Ji Ga Zo™ software, it may be due to one of the following reasons:

Administrative rights. Make sure that the computer profile you are installing the Ji Ga Zo™ software on has administrative rights to install software. Some computers, such as a work computer or a computer account established for a minor, may not have rights to install new software. The error you will receive from the Ji Ga Zo™ installer will not explicitly tell you whether this was the cause of the error.

Adobe® AIR®. The Ji Ga Zo™ software uses an application called Adobe® AIR® to run. This is a common application and is used by a number of different pieces of software. In some cases, having an older version of Adobe® AIR® on your computer can cause the Ji Ga Zo™ installer to give you an error message. If you are experiencing an error, check to see if you already have Adobe® AIR® installed on this computer. If you do, uninstall Adobe® AIR® and try the installer again.

Created by Kenneth C. Knowlton, Mark Setteducati and Tenyo Co. Ltd.

© 2010 Hasbro, Pawtucket, RI 02862 USA. All Rights Reserved. TM & ® denote U.S.

Trademarks. Patents Pending. Colors and parts may vary from those pictured.

Manufactured by: Hasbro, Inc., Pawtucket, RI 02862 USA

Hasbro Europe, 2 Roundwood Ave, Stockley Park, Uxbridge, Middlesex, UB11 1AZ, UK.
Hasbro Europe is the authorized representative of Hasbro SA in the European Union.

Consumer contact:

USA and Canada: Hasbro Games, Consumer Affairs Dept., P.O. Box 200, Pawtucket, RI 02862 USA. ☎ 888-836-7025. UK: Consumer Services: Hasbro UK Ltd., PO Box 43 Newport NP19 4YD, UK. ☎ 00800 22427276. Consumer_affairs@hasbro.co.uk
www.hasbro.co.uk Hasbro Australia Ltd., Level 2, 37-41 Oxford Street, Epping, NSW 2121, Australia. ☎ 1300 138 697. Hasbro NZ (a branch of Hasbro Australia Ltd.), 221 Albany Highway, Auckland, New Zealand. ☎ 0508 828 200. 1012785601



PROOF OF PURCHASE



Troubleshooting

If you are having trouble installing the Ji Ga Zo™ software, it may be due to one of the following reasons:

Administrative rights. Make sure that the computer profile you are installing the Ji Ga Zo™ software on has administrative rights to install software. Some computers, such as a work computer or a computer account established for a minor, may not have rights to install new software. The error message you may receive from the Ji Ga Zo™ installer will not explicitly tell you whether this was the cause of the error.

Adobe® AIR®. The Ji Ga Zo™ software uses an application called Adobe® AIR® to run. This is a common application and is used by a number of different pieces of software. In some cases, having an older version of Adobe® AIR® on your computer can cause the Ji Ga Zo™ installer to give you an error message. If you are experiencing an error, check to see if you already have Adobe® AIR® installed on this computer. If you do, uninstall Adobe® AIR® and try the installer again.

1012785600