

## **1. WELCOME TO THE BEST FISHING EXPERIENCE YOU CAN HAVE WITHOUT GETTING WET:**

Your unit comes complete with 3 different fishing poles, a tackle box with 20 different lures and a speed sensitive reel for the best possible results. As you fish, you'll travel to various sites in Alaska, the Midwest and the Northwest. There are even two kinds of fishing you can do: TOURNAMENT MODE and REGULAR MODE! You are equipped (as are all great fishermen) with both regular views and sonar views.

In ALASKA, you'll fish for SALMON in streams and SNAPPER in lakes.  
In the MIDWEST, you'll fish for CATFISH in streams and BASS in lakes.  
In the NORTHWEST, you'll fish for TROUT in streams and PIKE in lakes.

## **2. WEATHER AND WATER CONDITIONS:**

Each of the 20 lures is electronically designed to respond differently depending on the weather and water conditions.

—When weather is bright and sunny, fish are not aggressive. They go to deeper water on these kinds of days. You need to use flashier colors of lures to entice them!

- On dark days (without much sun), you want to use darker lures.
- On murky, rainy days, the fish are more active. They don't feel they are as much the center of attention!
- On cold days, the fish are sluggish. You need to use slower retrieval on your line.
- When the weather is cloudy, use darker lures.
- When you're casting near shore, you want to choose float-dive lures for maximum results.
- When you sneak your boat into streams, you are better with top-water lures.
- In Alaska, you'll generally find colder, windier climates with the cleanest, clearest water.
- In the Midwest, you will find the Great Lakes region to have uncertain, changing weather conditions.

—In the Northwest, the weather is warmer and is either rainy or sunny.

The lures are also ultra-responsive to WIND DIRECTION. The old fisherman's adages remain true:

- “Wind from the East, fishing is least.” (hardest to catch fish)
- “Wind from the West, fishing is best.” (easiest to catch fish)
- “South and Southwest winds are good for fishing.”
- “Northeast winds are the worst!” (very hardest to catch fish)

### **3. THE LURES:**

All 20 lures can catch all kinds of fish. But the general rule is the bigger the lure, the bigger the fish you can catch. So check the sizes given below (in either oz. or inches). Spoons and crankbaits are the biggest lures. Of course also keep in mind how the weather and water conditions affect each lure!

1. Floater-Diver Crankbait
2. Deep-Diver Crankbait
3. Count-down Crankbait
4. 4 inch black plastic worm (darkest color of 3 plastic worms)
5. 6 inch red plastic worm (medium color of 3 plastic worms)

6. 8 inch yellow plastic worm (lightest color of 3 plastic worms)
7. 3/8 oz. jig
8. 1/2 oz. jig
9. feather tail jig - black
10. feather tail jig- red
11. feather tail jig - yellow
12. twister tail - black
13. twister tail - red
14. twister tail - yellow
15. popper top-water
16. buzz-bait top-water
17. 1/2 oz. red-white spoon (two-color spoon)
18. 3/8 oz. silver-gold spoon (two-color spoon)
19. 1/2 oz. chartreuse spoon
20. 3/8 fluorescent orange spoon

#### 4. THE THRILL OF VICTORY — CATCH IT:



— SNAPPER  
5 to 25 lbs.



— SALMON  
5 to 25 lbs.



— PIKE  
5 to 25 lbs.



— CATFISH  
2 to 25 lbs.

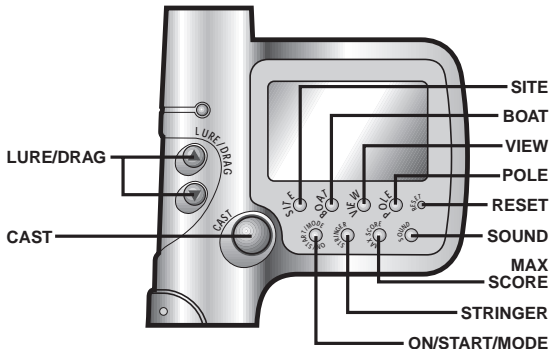


— TROUT  
2 to 25 lbs.



— LARGE-MOUTH BASS  
1 to 15 lbs.

## 5. ENJOY A GREAT SUPPORTING "CAST":



## **ON/START/MODE**

- to turn on the unit.
- to confirm your choice of pole.
- to select game mode of your choice (REGULAR or TOURNAMENT).

## **POLE**

- to toggle selection of three fishing poles:
  - "1" is a moderately weighted pole;
  - "2" is a stronger, heavier pole so you don't feel as much vibration, but it's easier to set the hook;
  - "3" is a lighter pole where you feel the vibration more intensely but it's harder to set the hook.

## **CAST**

- press and hold down this button and actually cast your pole forward to cast and then release the button to complete your cast.
- hold down this button for instant retrieval of your line (only possible when no fish is on your line).

## **VIEW**

- to toggle between the two fishing views (SONAR and FISHING).

## **SITE**

—to toggle between streams and lakes in Alaska, the Midwest and the Northwest. (Use Site button only when you are in SONAR MODE).

## **LURE/DRAW "▲"**

—to toggle up when selecting a lure.

—to increase the drag (only when the line is in the water).

## **LURE/DRAW "▼"**

—to toggle down when selecting a lure.

—to decrease the drag (only when the line is in the water).

## **BOAT**

—to move your boat around a particular lake or stream.

## **STRINGER**

—to view the fish you've caught in the current game.

## **MAX SCORE**

—to show the five biggest fish caught (in either mode).



## **SOUND**

—to control sound: on or off.

## **RESET**

—to reset the unit if your game malfunctions.

## **REEL**

—crank your time sensitive reel to reel in your line!

## **6. HOW TO PLAY**

- Press the **ON/START/MODE** button to turn on the unit.
- Then press **ON/START MODE** again to choose between the two modes: **REGULAR MODE** or **TOURNAMENT MODE**.

In **TOURNAMENT MODE**, you have a 20 minute time limit. In **REGULAR MODE**, there is no time limit, no limits at all to all the fun you want to have fishing. In both modes, your five biggest catches are saved.

- Use the **POLE** button to choose from the three fishing poles.
- Then press the **START** button to confirm your pole selection.

- Use your **SITE** button to choose your location. You must toggle to the **SONAR MODE** in order to use the SITE button. The **SITE** button will not work when you are in **FISHING MODE**.



ALASKA



MIDWEST



NORTHWEST

- Use your **BOAT** button to motor around your selected location. A good fisherman, of course, develops a sense where on the lake or stream is the best place to fish!
- To help you decide where to maneuver your boat, use the **VIEW** button to toggle between the **FISHING MODE** (regular view of fish) and the **SONAR MODE** (to electronically track schools of fish).
- Use the **LURE/DRAW** "▲" and **LURE/DRAW** "▼" buttons to choose a lure.

- Then press and hold down the **CAST** button and actually use your arm to actually cast out your unit, releasing the CAST button at the end of the cast.
- You will also see your **LINE OUT** and **LINE TENSION** registering on screen.
- Then use the speed-sensitive reel to begin to reel in your line. When you reel in slowly, your line will sink deeper in the water. When you reel in faster, your line will rise up to higher depths. Toggle back and forth between the **FISHING MODE** and **SONAR MODE** by using the VIEW button. For best chances of getting a strike, keep your lure at the depth level of the fish shown on the **SONAR** screen.



- When you get a bite, the pole will **VIBRATE!!!!**  
**NOW JERK BACK ON THE POLE** to hook him!  
You will hear a **SPLASH** when he's hooked!  
Now reel him in!!!



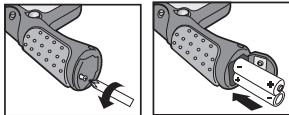
- Use the **LURE/DRAG "▲"** and **LURE/DRAG "▼"** buttons to increase or decrease your drag as necessary. Keep a careful watch on your **LINE TENSION** and **LINE OUT** displays. Do not stop reeling when you are adjusting the drag! If the line tension is increasing rapidly, you need to quickly adjust the **DRAG DOWN** to avoid breaking your line. If the tension is too low and your line out is increasing, you will need to adjust the **DRAG UP** to keep the fish from swimming away with your line!
- If your fishing pole does not continue to vibrate, then the fish got away. Keep reeling in your line and try to catch another one. The larger the fish, the harder it is to get the hook set.

When you are reeling in a fish and see the **GREEN LED** light flash on your unit, this is a warning to adjust the **DRAG** because either your line tension is too high or the line length is too long! Check the screen right away! Remember that if your line tension is high, then press **DRAG "▼"** to avoid the line breaking. If you check the screen and see that your line tension is low, remember to press **DRAG "▲"** to avoid having the fish swim away!

- You will hear a soft thud when you get your fish into the boat! The unit will display the NUMBER and LBS. of your fish.
- You can press the STRINGER button to view the fish you've caught in the current game (up to 9 fish). After the 9th catch, the newest fish caught will replace the oldest fish "on your string".
- The unit shuts off automatically after a few minutes of no fishing action.

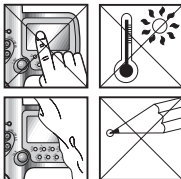
## 7. INSERTING THE BATTERIES

Fishing Champion requires 2 X "AA" / LR6 batteries(included). To insert batteries, open the battery cover on the end of handle by loosening the screw. Insert 2 "AA" batteries, making sure to align "+" and "-" as shown.



## 8. CAUTION/DEFECT AND DAMAGE

- To ensure proper function:
- Do not mix new & old batteries.
- Do not mix alkaline, standard or rechargeable batteries.
- Battery installation should be done by an adult.
- Non-rechargeable batteries are not to be recharged.
- Rechargeable batteries are to be removed from the toy before being charged (If removable).
- Rechargeable batteries are only to be charged under adult supervision (If removable).
- Only batteries of the same or equivalent type as recommended are to be used.
- Batteries are to be inserted with the correct polarity.
- Exhausted batteries are to be removed from the toy.
- The supply terminals are not to be short circuited.



## **9. 90-DAY LIMITED WARRANTY**

Tiger Electronics, Inc. (Tiger) warrants to the original consumer purchaser of this product that the product will be free from defects in materials or workmanship for 90 days from the date of original purchase. This warranty does not cover damages resulting from accident, negligence, improper service or use or other causes not arising out of defects in materials or workmanship.

During this 90-day warranty period, the product will either be repaired or replaced (at Tiger's option) without charge to the purchaser, when returned with proof of the date of purchase to either the dealer or to Tiger.

Product returned to Tiger without proof of the date of purchase or after the 90-day warranty period has expired, but prior to one year from the original date of purchase, will be repaired or replaced (at Tiger's option) for a service fee of U.S.\$12.00. Payments must be by check or money order payable to Tiger Electronics, Inc.

**The foregoing states the purchaser's sole and exclusive remedy for any breach of warranty with respect to the product.**

All product returned must be shipped prepaid and insured for loss or damage to:

Tiger Electronics, Inc. Repair Dept.  
980 Woodlands Parkway  
Vernon Hills, Illinois 60061, U.S.A.

The product should be carefully packed in the original box or other packing materials sufficient to avoid damage during shipment. Include a complete written description of the defect, a check if product is beyond the 90-day warranty period, and your printed name, address and telephone number.

**THIS WARRANTY IS IN LIEU OF ALL OTHER WARRANTIES AND NO OTHER REPRESENTATIONS OR CLAIMS OF ANY NATURE SHALL BE BINDING ON OR OBLIGATE TIGER IN ANY WAY. ANY IMPLIED WARRANTIES APPLICABLE TO THIS PRODUCT, INCLUDING WARRANTIES OF MERCHANTABILITY AND FITNESS FOR A PARTICULAR PURPOSE, ARE LIMITED TO THE NINETY (90) DAY PERIOD DESCRIBED ABOVE. IN NO EVENT WILL TIGER BE LIABLE FOR ANY SPECIAL, INCIDENTAL, OR CONSEQUENTIAL DAMAGES RESULTING FROM POSSESSION, USE, OR MALFUNCTION OF THIS TIGER PRODUCT.**



Some states do not allow limitations as to how long an implied warranty lasts and/or exclusions or limitations of incidental or consequential damages, so the above limitations and/or exclusions of liability may not apply to you. This warranty gives you specific rights, and you may also have other rights which vary from state to state.

**For more information about Tiger Electronics, our products and special promotions, please visit our web site at [www.tigertoys.com](http://www.tigertoys.com).**