

Disney's
**THE LITTLE
MERMAID** GAME

INSTRUCTIONS

2 to 4 Players

OBJECT

Be the first to change Ariel
from a mermaid into a human.

CONTENTS

- 1 Gameboard
- 2 Background Scenes/7 Standup Gameboard Pieces
- 4 Fish Pawns/1 Flotsam and Jetsam Pawn
- 1 Ariel Mermaid Pawn/1 Ariel Human Pawn
- 4 Small Plastic Pawn Stands/1 Large Plastic Pawn Stand
- 2 Plastic Pawn Clips/1 Spinner

THE GAME PARTS ARE STORED BELOW THE GAMEBOARD!



Begin Your Journey Under The Sea!

Assembly

1. Carefully lift the gameboard (the cardboard platform) out of the box bottom and remove the game parts stored below. Gently punch out all of the pieces from the two cardboard sheets. Discard the cardboard waste.
2. Punch out the slots in the gameboard before returning the gameboard to its original position in the box bottom.
3. Gently bend the two background scenes along the scored lines

and insert the lettered tabs into the matching lettered slots in the gameboard. See Figure 1.

NOTE: The end tabs of each piece must be inserted *between* the side of the gameboard and the side of the box bottom.

4. Insert the seven standup pieces into the remaining slots on the gameboard. (See Figure 1A.) Use the picture of the fully-assembled game on the box top as a guide.

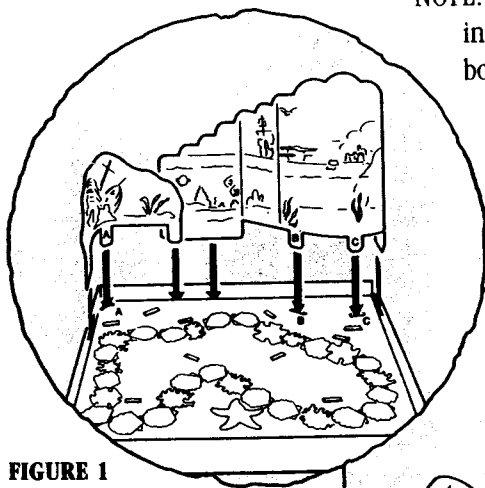
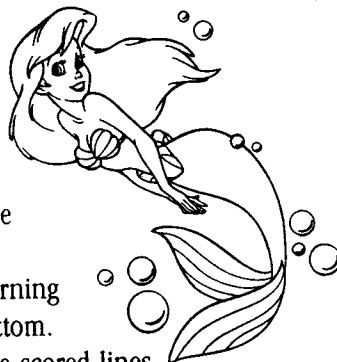


FIGURE 1

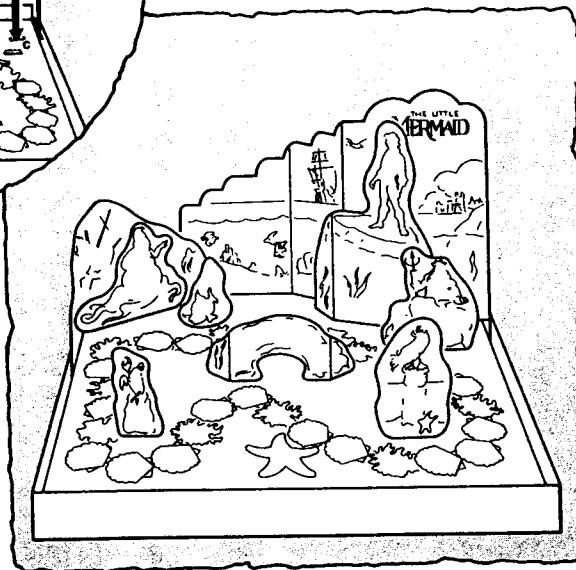


FIGURE 1A

5. Attach one plastic pawn clip to each Ariel pawn as shown in Figure 2.

Insert each Fish pawn into one of the small plastic pawn stands. Insert the Flotsam and Jetsam pawn into the large plastic pawn stand.

Setup

1. Clip the Ariel Mermaid pawn onto the lowest "step" of the large background scene as shown in Figure 3. Set the Ariel Human pawn aside for now.
2. Place the Flotsam and Jetsam pawn behind The Cave as shown in Figure 4.
3. Choose a Fish pawn and place it on the starfish in the START area of the gameboard. All players do the same.
4. Place the spinner within easy reach of all players.

FIGURE 2

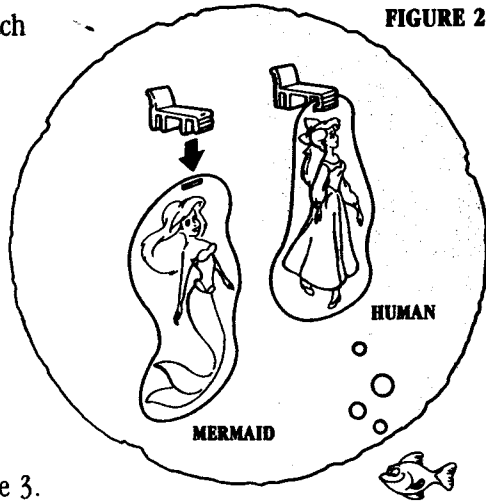


FIGURE 3

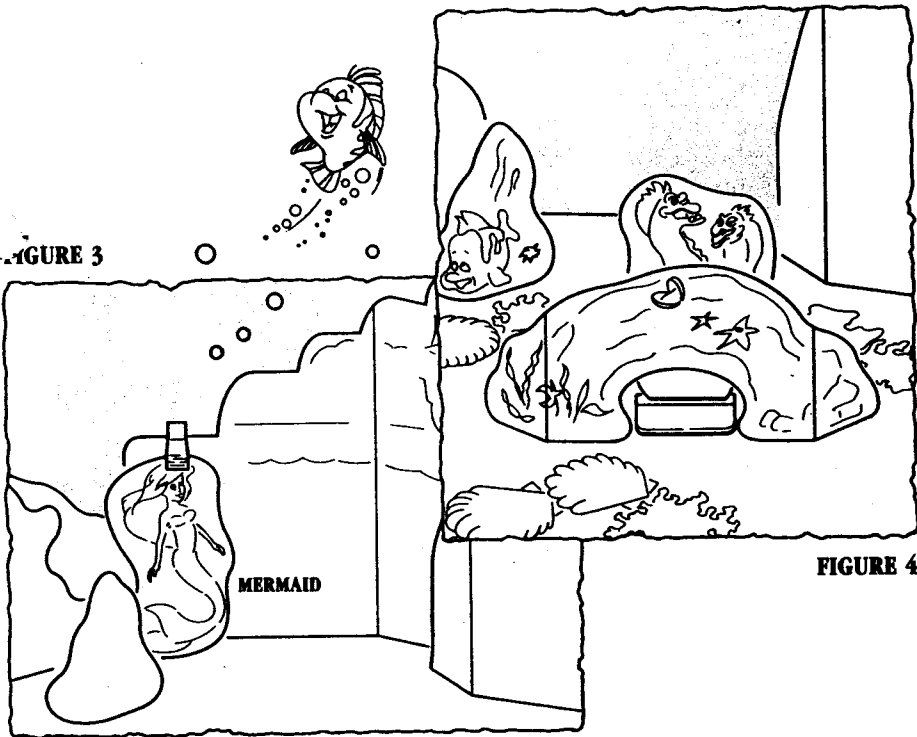


FIGURE 4

The Adventure Continues!

How To Play

The youngest player goes first. Play then continues to the left.

ON YOUR TURN

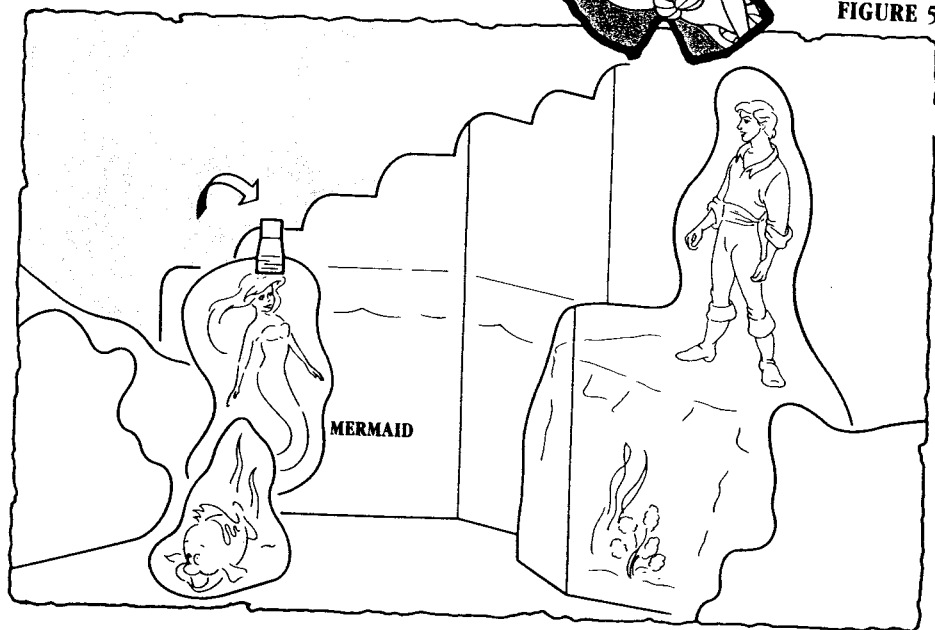
1. Spin the arrow on the spinner.
2. Move your Fish pawn clockwise along the path to the first space that matches the color shown on the spinner. If another player's pawn is already on that space, "swim" ahead to the next open matching color space. This ends your turn.

ARIEL SPACES

If you land on a space that shows a picture of Ariel, move the Ariel pawn up one "step" closer to Prince Eric. Each step closer to Prince Eric brings Ariel closer and closer to her dream coming true! Figure 5 shows an example of how to move Ariel.



FIGURE 5



FLOTSAM AND JETSAM SPACES

If you land on a space that shows a picture of Flotsam or Jetsam, place their pawn next to your Fish pawn, but not on the path. You are now trapped! You cannot spin or move from your space while Flotsam and Jetsam are "guarding" you.

You will be freed only when another player lands on another Flotsam and Jetsam space and moves them away. Once you are free, you may spin and move on your next turn.



2-PLAYER GAME EXCEPTION: To avoid being trapped for a long period of time in a 2-Player game, do the following when landing on a Flotsam and Jetsam space:

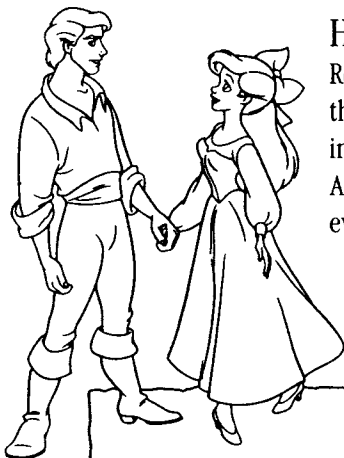
1. Place the Flotsam and Jetsam pawn next to your Fish pawn, but not on the path. You are now trapped on that space. This ends your turn.
2. On your next turn, if you have not already been freed, move the Flotsam and Jetsam pawn back behind The Cave. This ends your turn. You are now free to spin and move on your following turn.



Ariel's Dream Comes True!

Winning The Game

The first player to move the Ariel Mermaid pawn onto the top "step" changes Ariel into a human and wins the game.



HOW TO CHANGE ARIEL INTO A HUMAN

Remove the Ariel Mermaid pawn from its position on the large background scene and replace it, as shown in Figure 6, with the Ariel Human pawn.

As a human, Ariel can now live happily ever after with Prince Eric!

FIGURE 6

