

STAR WARS EPISODE I

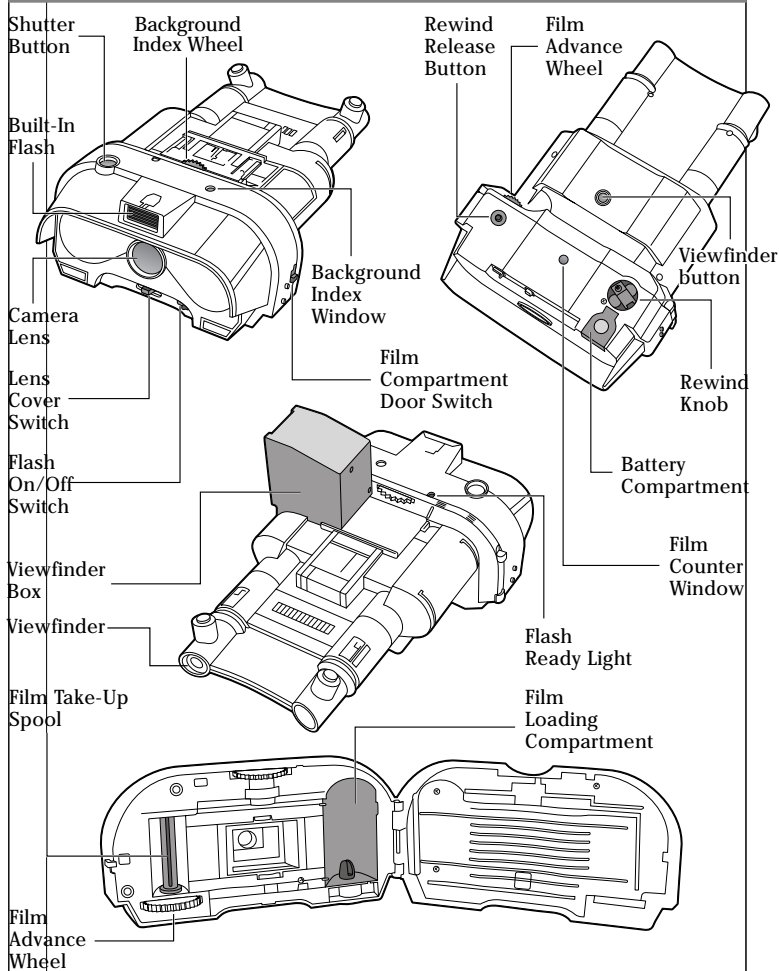
PICTURE PLUS IMAGE CAMERA

TIGER
ELECTRONICS, LTD.

INSTRUCTION

Battle droids are the foot soldiers of the Trade Federation army. Under the control of the Neimoidians, they serve as security, ground troops, and pilots of the Trade Federation battleships. Battle droids overwhelm their enemy and attack in massive waves. These electrobinoculars are standard issue to battle droid unit commanders.

GETTING STARTED



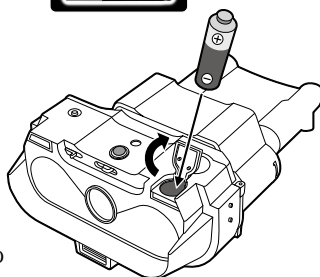
Note: Binoculars are for style only and do not have any magnification or function.

BATTERY INSTALLATION

To open the battery compartment cover, push the cover in the direction of the arrow marked on the outside of the cover and then lift up the cover. Insert 1 "AA" or LR6 battery (not included), making sure to align the "+" and "-" signs as shown. Return the battery compartment cover to its original position.



TO ENSURE PROPER FUNCTION :
- DO NOT MIX OLD AND NEW BATTERIES.
- DO NOT MIX ALKALINE, STANDARD OR RECHARGEABLE BATTERIES.
- BATTERY INSTALLATION SHOULD BE DONE BY AN ADULT.
- NON-RECHARGEABLE BATTERIES ARE NOT TO BE RECHARGED.

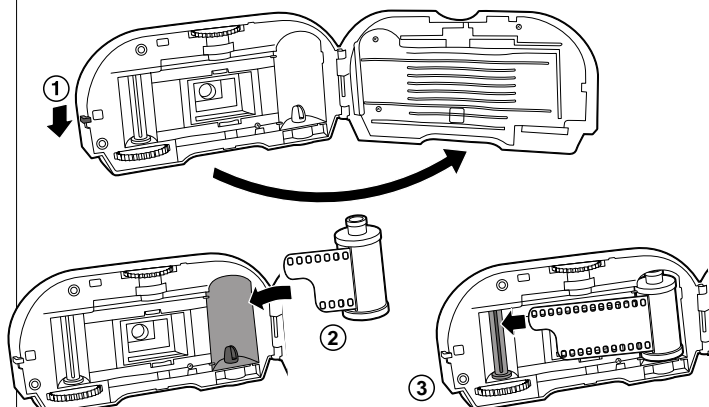


- RECHARGEABLE BATTERIES ARE TO BE REMOVED FROM THE TOY BEFORE BEING CHARGED (IF REMOVABLE).
- RECHARGEABLE BATTERIES ARE ONLY TO BE CHARGED UNDER ADULT SUPERVISION (IF REMOVABLE).
- ONLY BATTERIES OF THE SAME OR EQUIVALENT TYPE AS RECOMMENDED ARE TO BE USED.
- BATTERIES ARE TO BE INSERTED WITH THE CORRECT POLARITY.
- EXHAUSTED BATTERIES ARE TO BE REMOVED FROM THE TOY.
- THE SUPPLY TERMINALS ARE NOT TO BE SHORT-CIRCUITED.

CHOOSING FILM

This camera accepts standard 35mm(135), ISO 400 film with up to 36 exposures.

LOADING THE FILM



SELECTING A BACKGROUND

There are 6 pre-selected backgrounds built into this camera. The pre-selected background will appear on the left side of your photo.

To select one of the 6, turn the background index wheel to the letter that corresponds to the background you wish to use on your picture. The wheel can be turned to the left or right. A slight "click" will be felt as the wheel is turned to indicate that the wheel is in the correct position or white dot is appeared on the wheel. The letter of the background selected will be visible in the background index window.

A different background may be chosen for each picture simply by turning the background index wheel to a different corresponding letter before taking a picture.

To turn off the background and to take a picture without a background, turn the background index wheel to the "-" symbol, which can be located after the letter "F".

IMPORTANT NOTES:

1. The shutter button will not take a picture if the background index wheel is not in the correct position.
2. The flash must be turned ON when taking a picture indoors or outdoors with a pre-selected background.

Background Index Wheel Symbol		Pre-Selected Background
A		Qui-Gon Jinn
B		Anakin Skywalker
C		Obi-Wan Kenobi
D		Darth Maul
E		Jar Jar Binks
F		Queen Amidala
-		no background

LENS COVER AND LENS COVER SWITCH

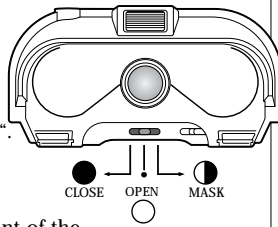
To open the lens cover, slide the lens cover switch to the "open" or "mask" position. Look at the front of the camera and make certain the lens cover does not cover over the lens.

To take a picture using one of the backgrounds, slide the lens cover to mask "●". To take a picture without a background, slide the lens cover to open "○".

To close the lens cover, slide the lens cover switch to the "closed" position. Look at the front of the camera and make certain the lens is covered and protected from damage.

IMPORTANT NOTES:

1. The lens cover must be opened to take a picture "○".
2. The lens cover switch must be on mask to take a picture with a background. The special background aperture will appear on the front of the lens "●".
3. The lens cover must be closed when the camera is not in use to protect the lens from damage "●".

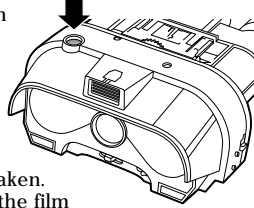


SHUTTER BUTTON

The shutter button must be pressed down each time you take a picture. Press the button and a slight "click" will be heard to indicate the camera has taken a picture.

IMPORTANT NOTES:

1. The shutter button will not take another picture if the film advance wheel was not advanced when the previous picture was taken.
2. The shutter button will not function when the film has reached the end of the film cartridge. Make certain the number of exposures in the film counter window matches the exposures on the film.
3. The shutter button will not function when the background index wheel is not in the correct position.



VIEWFINDER SYSTEM

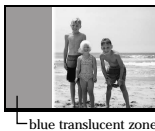
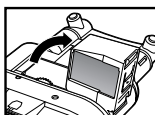
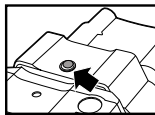
To open the viewfinder box, press the viewfinder button located on the bottom of the camera. The box will pop up slightly. Pull the box to an upright position. (see illustration at right)

NOTE: The viewfinder box must be pulled upwards to take a picture.

To take a picture, look through the left hole of the camera. The right hole of the camera does not function.

Close the viewfinder box when the camera is not in use to prevent damage.

When you use the camera to take a picture with an image inserted onto the photo, you will notice a blue area on the left. This area is where the image will appear on the picture. Be careful not to put the subject of your picture inside this area or else it will interfere with the background image.



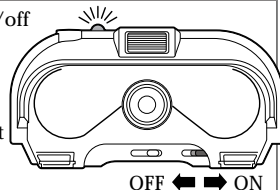
BUILT-IN FLASH and FLASH ON/OFF SWITCH

To turn on the flash, simply slide the flash on/off switch to the ON position. To turn off the flash, simply slide the flash on/off switch to the OFF position.

It takes approximately 8 seconds for the flash to charge after each use. The flash ready light will go on when the flash is ready.

IMPORTANT NOTES:

1. To take a picture indoors or outdoors with a background, the flash on/off switch must be turned ON and the lens cover must be moved to the open position.
2. To take a picture without a background, use the flash when you are indoors or in poor light conditions.
3. When the camera is set to insert a character onto the photo, the flash is automatically locked into the ON position.



TAKING A PICTURE

1. Install new batteries for best results
2. Load the film
3. Select one of the 6 pre-selected backgrounds or take a picture without a background
4. Open the lens cover
5. Pull the viewfinder box upward to view the object of the picture.
6. Turn on the flash for pictures with a pre-selected background, indoor or poor light conditions.
7. Look into the viewfinder and center the object in the window
8. Press down on the shutter button
9. Turn the film advance wheel clockwise to advance the film
10. The camera is now ready to take another picture

Congratulations - you have taken a picture using the Picture Plus Image Camera!

FOR BEST RESULTS

1. If you are taking a picture outside, without the flash, try to keep the sun behind you.
2. If you are taking a picture inside, turn on the flash and wait for it to be charged.
3. Hold the camera steady. If necessary, place the camera on a stable surface.
4. Press the shutter button gently so the camera does not move.
5. Don't forget to turn the film advance wheel each time you take a picture.
6. Monitor the film counter window and do not take any pictures when the number in the window matches the film exposures on the film.

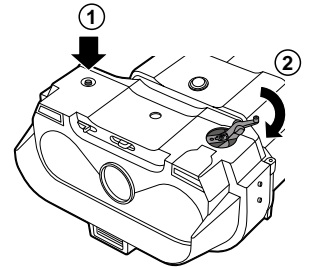
UNLOADING THE FILM

When the film counter window matches the film exposures on the film, the film cartridge must be rewound and removed.

To rewind the film, press the rewind release button ①, unfold the rewind crank ②, and turn the crank clockwise.

When the film is almost completely rewound, there will be slight tension against the crank. Continue to turn the crank until the tension is released and the entire film is wound onto the film cartridge.

Open the film compartment, remove the film and bring the film to a film processing center.



CAUTION/DEFAULT OR DAMAGE

Replace battery at the first sign of erratic operation.

If a part of your camera is damaged or something has been left out, DO NOT RETURN THE GAME TO THE STORE. The store doesn't have replacement parts. Instead, write to us at:

Tiger Electronics, Ltd. Repair Center
980 Woodlands Parkway,
Vernon Hills, Illinois 60061, U.S.A.

Please include a note with your return explaining the problem along with a sales slip, date, place of purchase and price paid. We will do our best to expedite your return promptly.

90-DAY LIMITED WARRANTY

Tiger Electronics, Ltd. (Tiger) warrants to the original consumer purchaser of this product that the product will be free from defects in materials or workmanship for 90 days from the date of original purchase. This warranty does not cover damages resulting from accident, negligence, improper service or use or other causes not arising out of defects in materials or workmanship.

During this 90-day warranty period, the product will either be repaired or replaced (at Tiger's option) without charge to the purchaser, when returned with proof of the date of purchase to either the dealer or to Tiger.

Product returned to Tiger without proof of the date of purchase or after the 90-day warranty period has expired, but prior to one year from the original date of purchase, will be repaired or replaced (at Tiger's option) for a service fee of U.S.\$17.00. Payments must be by check or money order payable to Tiger Electronics, Ltd.

The foregoing states the purchaser's sole and exclusive remedy for any breach of warranty with respect to the product.

All product returned must be shipped prepaid and insured for loss or damage to:

Tiger Electronics, Ltd. Repair Dept.
980 Woodlands Parkway, Vernon Hills,
Illinois 60061, U.S.A.

The product should be carefully packed in the original box or other packing materials sufficient to avoid damage during shipment. Include a complete written description of the defect, a check if product is beyond the 90-day warranty period, and your printed name, address and telephone number.

THIS WARRANTY IS IN LIEU OF ALL OTHER WARRANTIES AND NO OTHER REPRESENTATIONS OR CLAIMS OF ANY NATURE SHALL BE BINDING ON OR OBLIGATE TIGER IN ANY WAY. ANY IMPLIED WARRANTIES APPLICABLE TO THIS PRODUCT, INCLUDING WARRANTIES OF MERCHANTABILITY AND FITNESS FOR A PARTICULAR PURPOSE, ARE LIMITED TO THE NINETY (90) DAY PERIOD DESCRIBED ABOVE. IN NO EVENT WILL TIGER BE LIABLE FOR ANY SPECIAL, INCIDENTAL, OR CONSEQUENTIAL DAMAGES RESULTING FROM POSSESSION, USE, OR MALFUNCTION OF THIS TIGER PRODUCT.

Some states do not allow limitations as to how long an implied warranty lasts and/or exclusions or limitations of incidental or consequential damages, so the above limitations and/or exclusions of liability may not apply to you. This warranty gives you specific rights, and you may also have other rights which vary from state to state.

For more information about Tiger Electronics, our products and special promotions, please visit our Web Site at: www.tigertoys.com

© Lucasfilm Ltd. & TM. All rights reserved.
Used under authorization.

TIGER
ELECTRONICS, LTD.

® , TM, & © 1999 Tiger Electronics, Ltd. All rights reserved.
980 Woodlands Parkway, Vernon Hills, Illinois 60061, U.S.A.

www.tigertoys.com

PRINTED IN CHINA