

**⚠ CAUTION:**

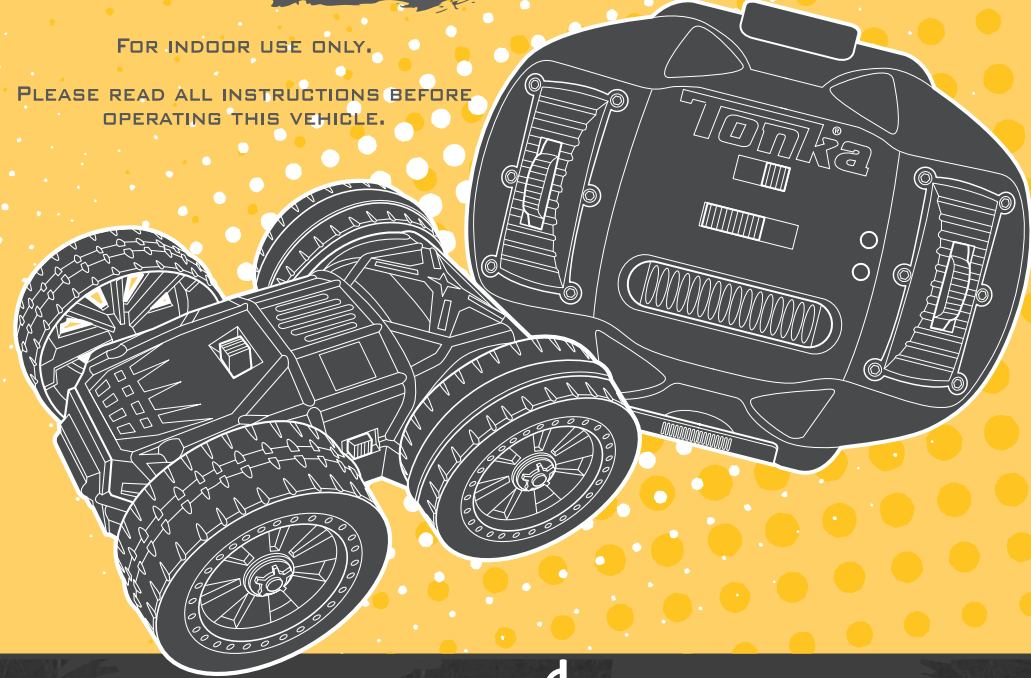
Hair entanglement may result if child's hair comes in contact with moving parts of toy. Adult supervision is required.

**AGES**  
**6+**  
28655 Asst.

# Tonka X4 RICOCHET TRICKSTERS™

FOR INDOOR USE ONLY.

PLEASE READ ALL INSTRUCTIONS BEFORE  
OPERATING THIS VEHICLE.



**CONTROLLER:**

**VEHICLE:**

**x5**

**BATTERIES REQUIRED**

1.5V AA or LR6 size  
**NOT INCLUDED**

Alkaline batteries required. Phillips/cross  
head screwdriver (not included) needed to  
insert batteries.

**x1**

**BATTERY INCLUDED**

Includes one 3.6V 250mAh non-replaceable rechargeable NiMH battery.  
Please dispose of the included NiMH battery properly.

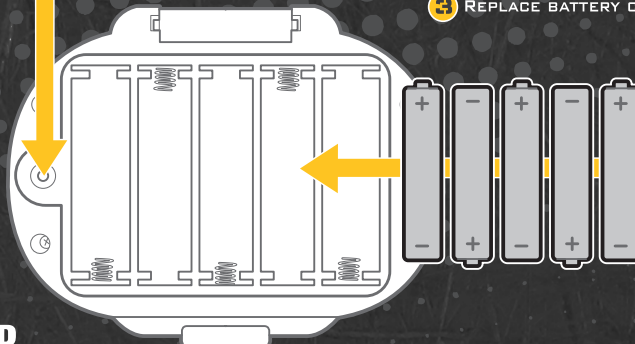
## SAFETY PRECAUTIONS:

- DO NOT USE THE VEHICLE NEAR A HEAT SOURCE (I.E. FIRE OR HEATER).
- KEEP VEHICLE IN YOUR SIGHT AT ALL TIMES.
- KNOW YOUR SURROUNDINGS AND CLEAR THE AREA OF OBSTRUCTIONS BEFORE EACH USE.
- USE AWAY FROM PEOPLE, ANIMALS, OR BREAKABLE OBJECTS.
- USE ONLY THE PROVIDED CHARGER TO RECHARGE THE VEHICLE.
- DO NOT DISASSEMBLE OR MODIFY THE VEHICLE.
- DO NOT ALLOW THE VEHICLE TO GET WET.



## TO INSERT BATTERIES INTO CONTROLLER/CHARGER:

- 1 USING A PHILLIPS/CROSS HEAD SCREWDRIVER (NOT INCLUDED),  
UNSCREW BATTERY COVER.
- 2 INSERT 5 FRESH 1.5 V AA OR R6 SIZE BATTERIES.  
ALKALINE BATTERIES RECOMMENDED.
- 3 REPLACE BATTERY COVER AND TIGHTEN SCREW.



## IMPORTANT: CONTROLLER BATTERY INFORMATION

### ⚠ CAUTION:

1. Always follow the instructions carefully. Use only batteries specified and be sure to insert them correctly by matching the + and – polarity markings.
2. Do not mix old batteries and new batteries or standard (carbon-zinc) with alkaline batteries.
3. Remove exhausted or dead batteries from the product.
4. Remove batteries if product is not to be played with for a long time.
5. Do not short-circuit the supply terminals.
6. Should this product cause, or be affected by, local electrical interference, move it away from other electrical equipment. Reset (switching off and back on again or removing and re-inserting batteries) if necessary.
7. RECHARGEABLE BATTERIES: Do not mix these with any other types of batteries.

Always remove from the product before recharging. Recharge batteries under adult supervision. DO NOT RECHARGE OTHER TYPES OF BATTERIES.

## IMPORTANT: VEHICLE BATTERY INFORMATION

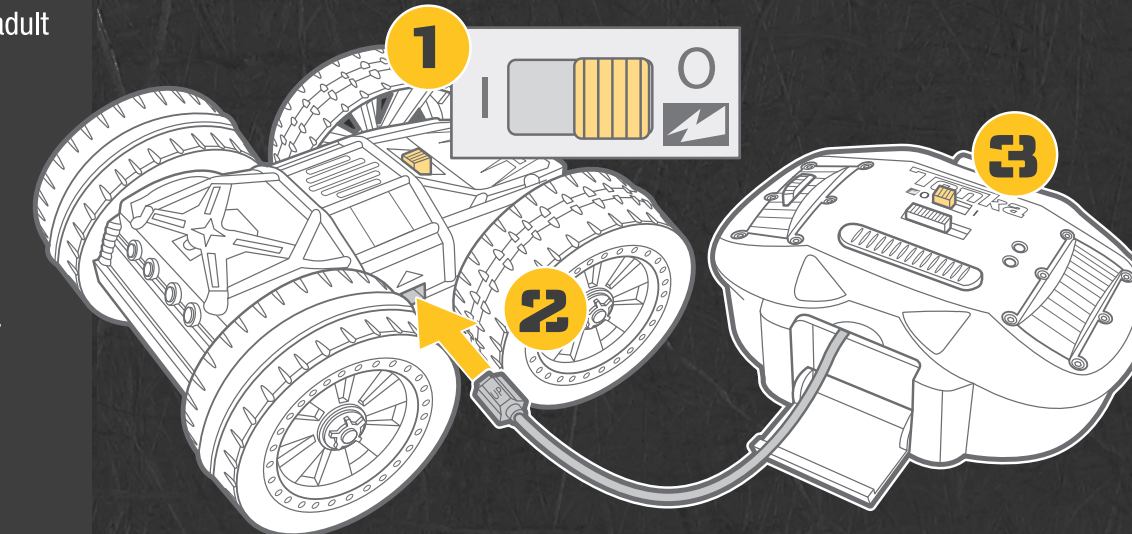
### ⚠ WARNING:

Risk of fire, explosion, and burns. Do not disassemble, crush, heat above 60 degrees C (140° F), or incinerate. Dispose of the whole product according to local recycling or waste regulations – never disassemble. Do not use the item near a heat source such as a fire or heater.

## HOW TO CHARGE THE VEHICLE:

- 1 SLIDE THE VEHICLE'S POWER SWITCH TO OFF.
- 2 PLUG THE CHARGING WIRE INTO THE VEHICLE'S CHARGING SOCKET.
- 3 SLIDE THE CONTROLLER'S POWER SWITCH TO ON. WHEN THE VEHICLE IS CHARGING, THE CHARGE LIGHT WILL BLINK. WHEN THE VEHICLE IS FULLY CHARGED, THE LIGHT WILL STOP BLINKING AND REMAIN ON FOR 5 MINUTES.

WHEN THE VEHICLE IS FULLY CHARGED, SLIDE THE CONTROLLER/CHARGER'S POWER SWITCH TO OFF AND REMOVE THE CHARGING WIRE FROM THE VEHICLE. REPLACE IT IN THE CHARGING WIRE COMPARTMENT. THE VEHICLE WILL BE ABLE TO RUN FOR 5 - 10 MINUTES AFTER 20 - 30 MINUTES OF CHARGING.



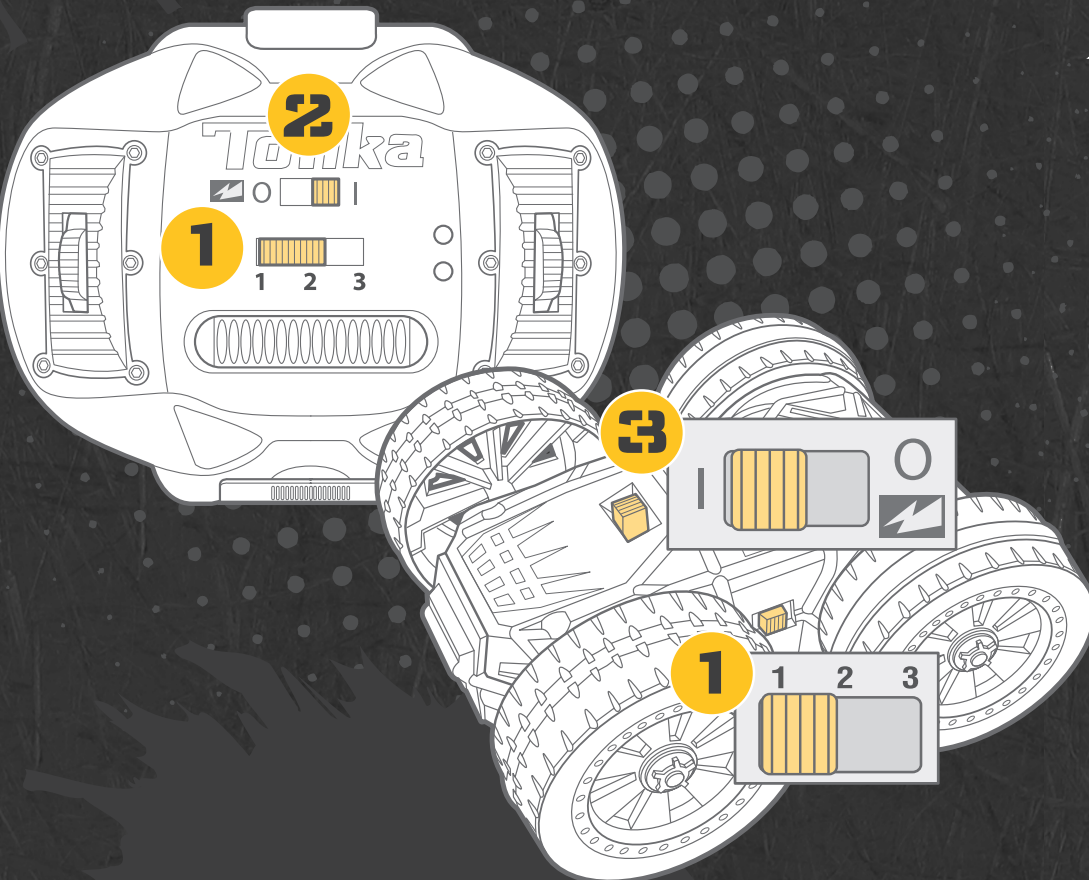


HOW TO OPERATE YOUR VEHICLE:

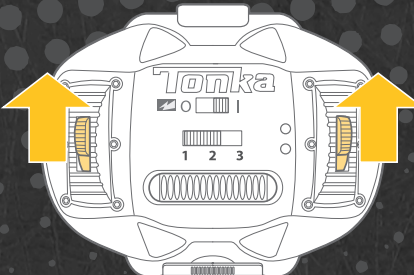
1 MOVE THE CHANNEL SELECTOR SWITCH ON VEHICLE AND CONTOLLER TO THE SAME POSITION - 1, 2, OR 3. IF MULTIPLE VEHICLES ARE BEING OPERATED IN THE SAME AREA, EACH MUST BE SET TO A DIFFERENT NUMBER.

2 SWITCH ON THE CONTROLLER.

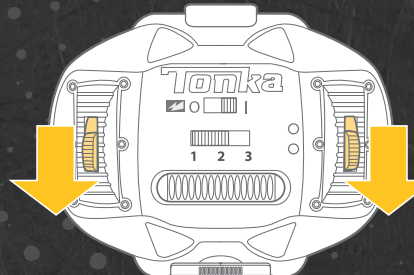
3 SWITCH ON THE VEHICLE.



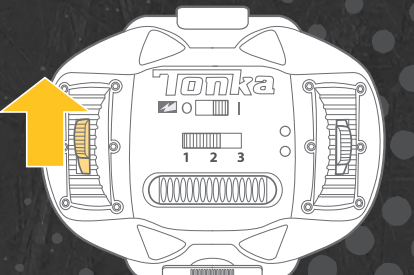
FORWARD



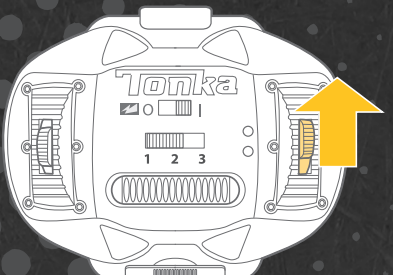
REVERSE



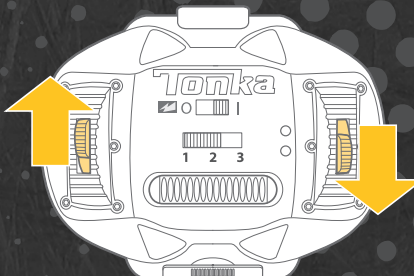
TURN RIGHT



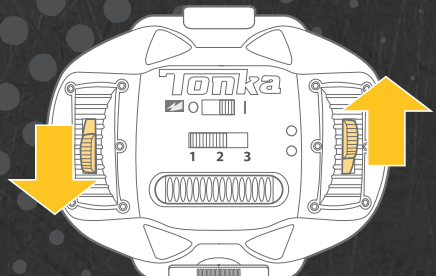
TURN LEFT



RIGHT SPIN



LEFT SPIN



NOTE: WHEN THE VEHICLE IS FLIPPED UPSIDE DOWN, THE CONTROLS WILL BE REVERSED.

PRESS THE TRICK TRIGGER™ AT ANY TIME TO PERFORM YOUR VEHICLE'S SIGNATURE STUNT!

TROUBLESHOOTING:

PROBLEM	POSSIBLE CAUSE	SOLUTION
Vehicle stops suddenly.	Weak battery.	Recharge the vehicle or replace the batteries in the controller/charger.
	The vehicle is out of range of the controller/charger.	Move the vehicle or the controller/charger in range of each other.
The vehicle is not responding to the controller/charger.	The channel selections are not correct.	Make sure the same channel (1, 2 or 3) is selected on the vehicle and the controller/charger.
	The vehicle is losing control.	Check for another infrared (IR) device nearby that is using the same channel.
The vehicle is not holding a charge.	Brights lights are affecting the infrared (IR) control.	Find another area away from other IR devices.
	The vehicle is switched ON while charging.	Lower the lights or move to a different area.
	The vehicle is switched OFF while charging.	Switch the vehicle OFF while charging.
	The controller/charger's batteries are weak.	Replace the batteries in the controller/charger.
For questions call 888-722-3972.		

FCC STATEMENT

THIS DEVICE COMPLIES WITH PART 15 OF THE FCC RULES. OPERATION IS SUBJECT TO THE FOLLOWING TWO CONDITIONS: (1) THIS DEVICE MAY NOT CAUSE HARMFUL INTERFERENCE, AND (2) THIS DEVICE MUST ACCEPT ANY INTERFERENCE RECEIVED, INCLUDING INTERFERENCE THAT MAY CAUSE UNDESIED OPERATION.  
NOTE: THIS EQUIPMENT HAS BEEN TESTED AND FOUND TO COMPLY WITH THE LIMITS FOR A CLASS B DIGITAL DEVICE, PURSUANT TO PART 15 OF THE FCC RULES. THESE LIMITS ARE DESIGNED TO PROVIDE REASONABLE PROTECTION AGAINST HARMFUL INTERFERENCE IN A RESIDENTIAL INSTALLATION. THIS EQUIPMENT GENERATES, USES AND CAN RADIATE RADIO FREQUENCY ENERGY, AND, IF NOT INSTALLED AND USED IN ACCORDANCE WITH THE INSTRUCTIONS, MAY CAUSE HARMFUL INTERFERENCE TO RADIO COMMUNICATIONS. HOWEVER, THERE IS NO GUARANTEE THAT INTERFERENCE WILL NOT OCCUR IN A PARTICULAR INSTALLATION. IF THIS EQUIPMENT DOES CAUSE HARMFUL INTERFERENCE TO RADIO OR TELEVISION RECEPTION, WHICH CAN BE DETERMINED BY TURNING THE EQUIPMENT OFF AND ON, THE USER IS ENCOURAGED TO TRY TO CORRECT THE INTERFERENCE BY ONE OR MORE OF THE FOLLOWING MEASURES:

- REDIRECT OR RELOCATE THE RECEIVING ANTENNA.
- INCREASE THE SEPARATION BETWEEN THE EQUIPMENT AND RECEIVER.
- CONSULT THE DEALER OR AN EXPERIENCED RADIO/TV TECHNICIAN FOR HELP.

CAUTION: CHANGES OR MODIFICATIONS TO THIS UNIT NOT EXPRESSLY APPROVED BY THE PARTY RESPONSIBLE FOR COMPLIANCE COULD VOID THE USER'S AUTHORITY TO OPERATE THE EQUIPMENT.



Product and colors may vary.  
© 2011 Hasbro. All Rights Reserved.  
TM & © denote U.S. Trademarks.  
PN: 7128100003

